

TRADE AREA DEMOGRAPHICS

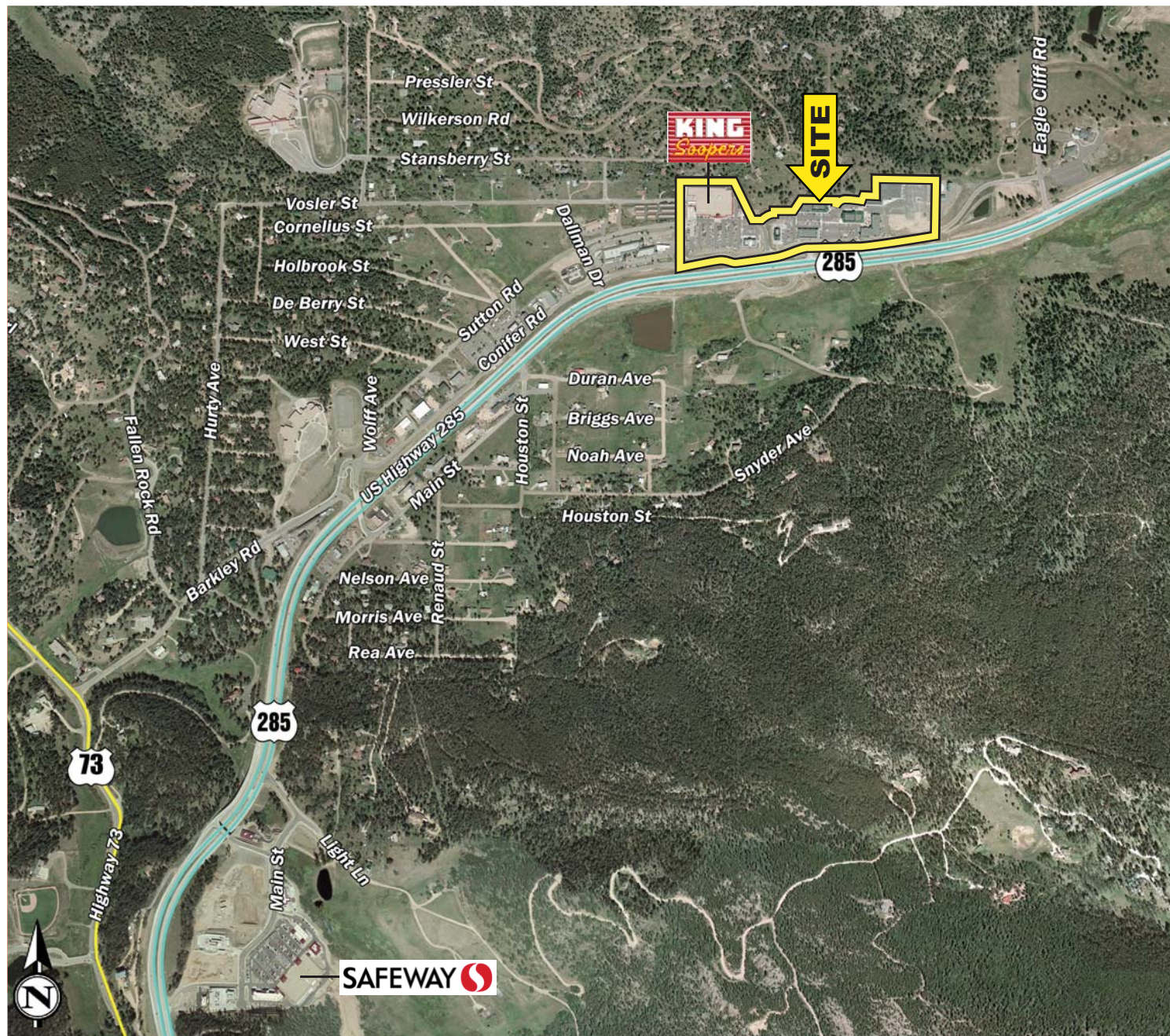
	3 Mile	5 Mile	10 Mile
Population	5,306	14,393	78,044
Average HH Income	\$113,871	\$112,186	\$119,026
Businesses/Employees	316/2,209	607/3,440	3,024/20,775

Source: Applied Geographic Solutions, 2013 Estimates

TRAFFIC COUNTS

On Hwy 285 west of Turkey Creek Rd | 44,000 Cars/day

Source: Map Info Corp. 2007

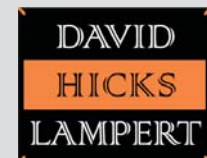


THE VILLAGE AT CONIFER ASPEN PARK

25637 CONIFER ROAD - CONIFER, CO 80433



- King Soopers anchored grocery with newly built Big R center in Conifer, Colorado.
- Prime in-line space available.
- Pads available for built-to-suit.



PLEASE CONTACT:

J.R. HAGAN

303.694.6082 x314

jr.hagan@dhlb.com

**DAVID, HICKS & LAMPERT
BROKERAGE, LLC**

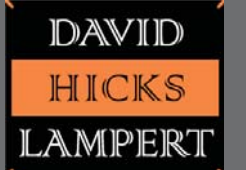
5750 DTC Parkway, Suite 200

Greenwood Village, CO 80111

Telephone 303.694.6082

Fax 303.793.0994

www.dhlb.com



www.dhlb.com

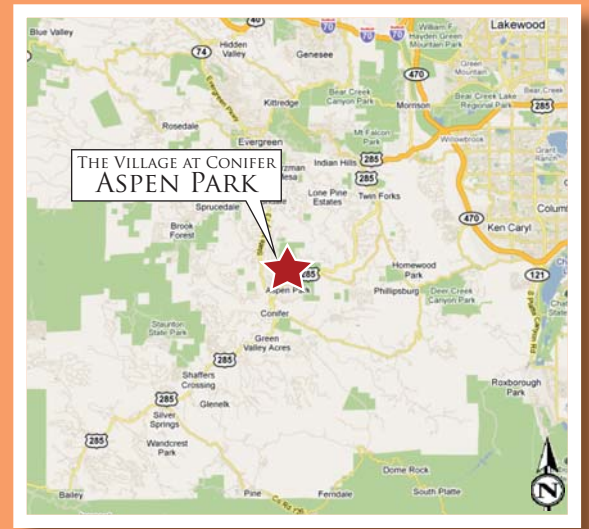
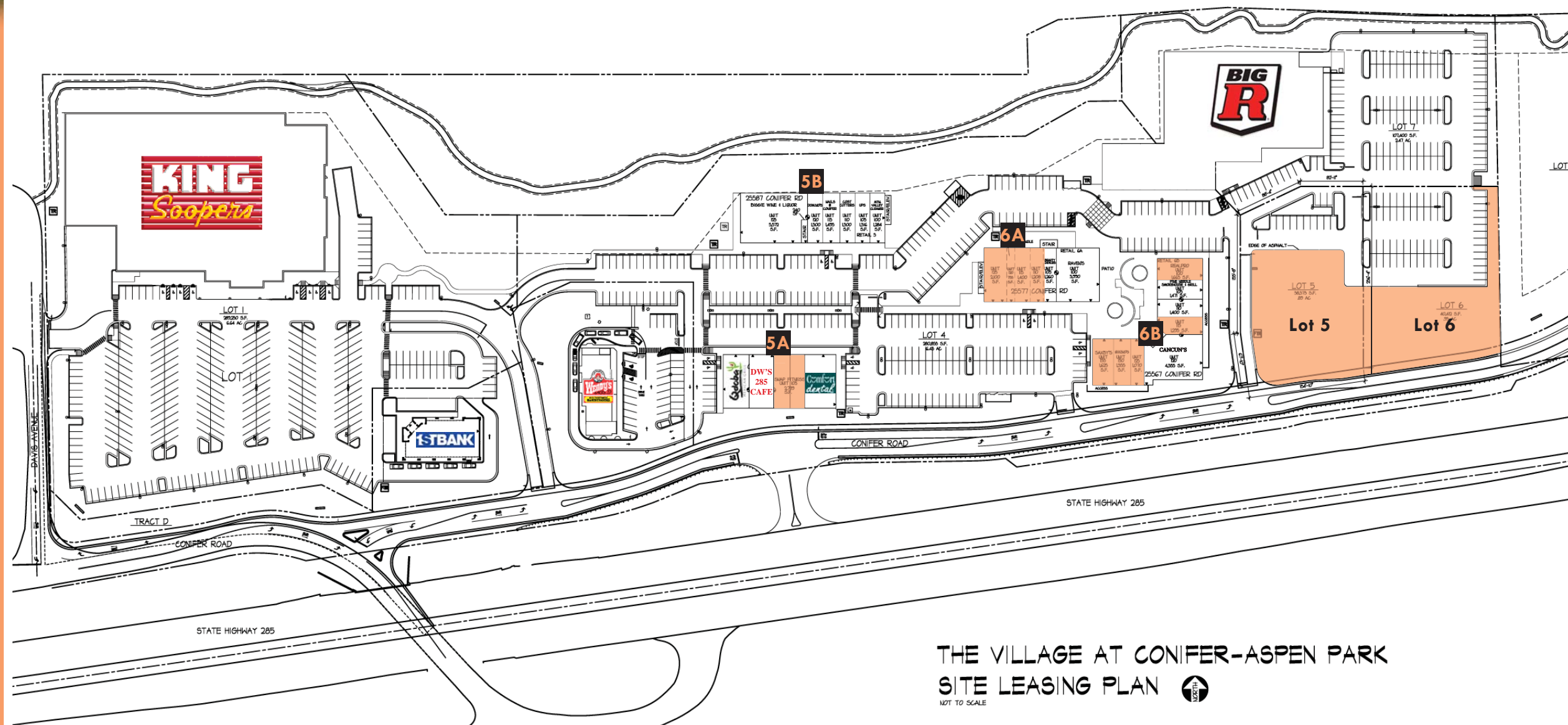


THE VILLAGE AT CONIFER ASPEN PARK

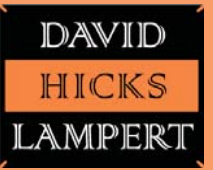
25637 CONIFER ROAD - CONIFER, COLORADO 80433



- Space available from 750 SF to 78,985 SF.
- Join King Soopers, Starbucks, Wendy's and 1st Bank.
- Site features high incomes and strong regional draws.



THE VILLAGE AT CONIFER-ASPEN PARK
SITE LEASING PLAN
NOT TO SCALE



BUILDING 5A	
Unit 103	2,864 SF

BUILDING 6A	
Unit 110A	1,209 SF
Unit 115A	1,402 SF
Unit 125A	3,000 SF
Unit 120A	750 SF

BUILDING 6B	
Unit 100B	1,665 SF
Unit 115B	1,295 SF
Unit 125A	1,060 SF
Unit 130A	1,355 SF
Unit 135A	1,665 SF

PAD SITES	
Lot 5	38,573 SF
Lot 6	40,412 SF

The information contained herein was obtained from sources deemed reliable. David, Hicks & Lampert Brokerage, LLC makes no warrant and assume no liabilities whatsoever for the accuracy or use of this data.